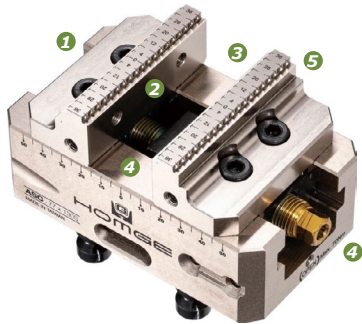


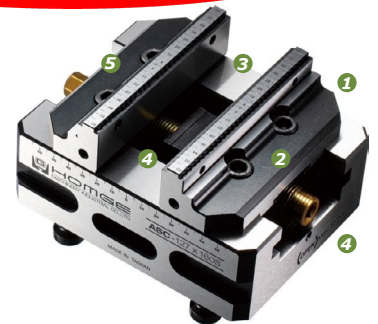
FIVE-AXIS ADJUSTABLE SELF-CENTERING VISES

PRICING VALID UNTIL FURTHER NOTICE



ASC-77x130S **\$1,229.00** each

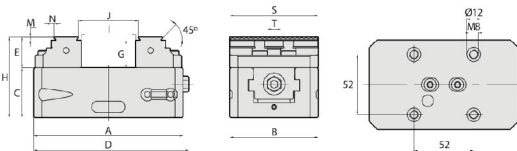
1. Vise body is made of **High quality Tool Steel**. The sideways are high frequency through hardened to 50 HRC for improved durability.
2. Detachable jaws are made of **High quality Tool Steel** carburized to **55HRC**. Since both jaws are fixed size they can be used as a datum. Users can reverse the jaws to increase the clamping range. **Four-bolt** fixation of the jaws eliminates jaw lift.
3. The vise's clamping force can achieve **1300KG**, the repeatability positioning precision of its clamping center is within **0.015mm**.
4. Users can calibrate the clamping center of vise by adjusting the screws on both ends.
5. The **45° dovetail structure with teeth** on the upper jaw ensures the bottom of the workpiece to be firmly clamped.



ASC-127x160S **\$1,553.00** each

Buy a Vise & Base Plate TOGETHER for \$1,899.00!

Includes 4 free pull studs (\$76.00 Value)



Buy a Vise & Base Plate TOGETHER for \$2,799.00!

Includes 4 free pull studs (\$92.00 Value)

BASE PLATE

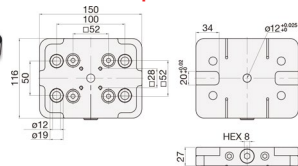


\$812.00 each

M-52x52 (8001)

Suitable for:
ASC-77x130S
ASC-77x130S4
ASC-77x170S
ASC-77x210S

- ◆ Features industry standard 52mm 4pull stud clamping on a high quality steel plate.
- ◆ Has 4 holes for clamping master pallet to machine table, indexer or tombstone.



Pull Stud

\$19.00 each

M52PS
◆ 4 pcs/set



Scan To View

The Latest Catalogue

BASE PLATE

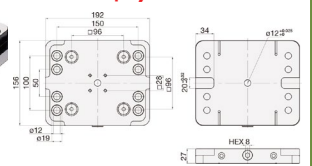


\$1,455.30 each

M-96x96 (8051)

Suitable for:
ASC-127x160S
ASC-127x210S
ASC-127x260S
ASC-127x310S
ASC-127x360S

- ◆ Features industry standard 96mm 4pull stud clamping on a high quality steel plate.
- ◆ Has 4 holes for clamping master pallet to machine table, indexer or tombstone.



Pull Stud

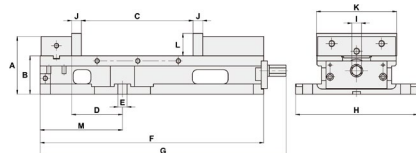
\$23.00 each

M96PS
◆ 4 pcs/set



TV-6 & TV-8 Vises

Versatile machine vises with large opening capacity



SPECIFICATIONS (Material: FCD 60 Ductile Iron. Hardness: HRC 50°)

Unit: mm

Model	A	B	C	D	E	F	G	H	I
TV-6" Super-Open 10"	113	77	250	100	16	455	484	240	19
TV-8" Super-Open 12"	139	87	305	138	16	570	620	300	19

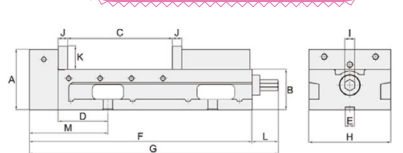
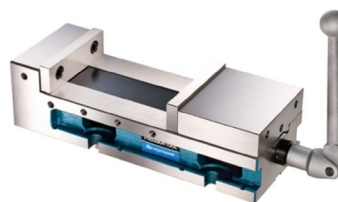
Model	J	K	L	M	N	O	P	Weight(kg)
TV-6" Super-Open 10"	19	160	44	162	250	329	389	36
TV-8" Super-Open 12"	24	215	61	230	305	419	469	62

Model	Price Each	4 Piece Plus Price
TV-6	\$849.00	\$799.00
TV-8	\$1,499.00	\$1,449.00

GH-6 & GH-8 Vises

Great value for the price!

Versatile machine vise which can be mounted on its end, side or base.



SPECIFICATIONS (Material: FCD 55 Ductile Iron. Hardness: HRC 50°)

Unit: mm/inch

Model	A	B	C	D	E	F	G	H	I	J	K	L	M	Weight(kg)
GH-6" Super-Open 8"	115	77	205	95	18	425	475	156	19	18	44	50	150	30
GH-8" Super-Open 12"	148	88	300	100	18	560	610	202	19	18	63	50	175	60

Model	N	O	P	Q	R	S	T	Weight(kg)
GH-6" Super-Open 8"	205	8 1/5	273	11 3/25	343	13 18/25	416	16 16/25
GH-8" Super-Open 12"	300	12	393	15 18/25	462	18 12/25	555	22 1/5

Model	Price Each	4 Piece Plus Price
GH-6	\$699.00	\$649.00
GH-8	\$1,399.00	\$1,349.00