

# ISCAR PROMOTIONS

Distributed By:



**Tool+Cutter**

[www.toolandcutter.com](http://www.toolandcutter.com)

[support@toolandcutter.com](mailto:support@toolandcutter.com)

1.800.265.6056



**MAX VALUE**  
MINIMUM COST MAXIMUM OUTPUT



Valid until September 30th, 2026  
IMPERIAL VERSION

**MINIMUM COST**

**MAXIMUM OUTPUT**

**MORE** PERFORMANCE  
PRODUCTIVITY  
PROFITABILITY

**MAXVALUE**





This miniature, double-sided tangential insert with 4 cutting edges offers a **cost-effective solution for stable, accurate 90° milling at shallow depths.**

**YOU**

MACHINING

INTELLIGENTLY?

Use Promo Code: **T2800/1**

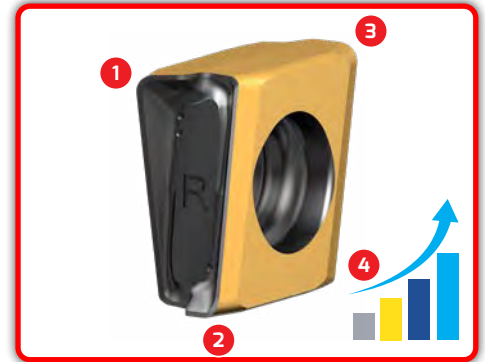
**1 Purchase**

20 inserts - T490 LNMT/HT 05/08... or T490 LNAR 08... same size any assortment

**Receive**

Corresponding T490 ELN...-05/08 endmill cutter up to 1.25"

**at a 60% Additional Discount**



Use Promo Code: **T2800/1**

**2 Purchase**

40 inserts - T490 LNMT/HT 05/08... or T490 LNAR 08... same size any assortment

**Receive**

Corresponding T490 FLN...-05/08 face mill cutter up to 2.50"

**at a 60% Additional Discount**

**SPECIAL OFFER**

Use Promo Code: **T2800/1**

**3 Purchase**

40 inserts - T490 LNMT/HT 05 same size any assortment

**Receive**

Corresponding T490 FM...SP face mills with a SP connection up to 2.00"

**at a 60% Additional Discount**

The image shown is for representational purposes.



**MAX VALUE**

MINIMUM COST MAXIMUM OUTPUT



The ultimate all-in-one indexable tool, combining milling and drilling to **increase versatility, maximize insert utilization, and improve cost efficiency.**

**YOU**

MACHINING

INTELLIGENTLY?

Use Promo Code: **T2802/3/4/5**

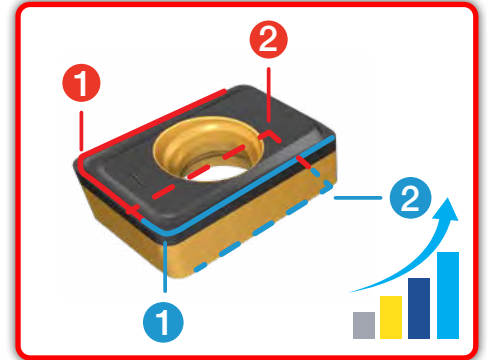
## 1 Purchase

20 inserts - MDR ANMU/HU 07/09/12/16... same size any assortment

## Receive

Corresponding MDR D...-07/09/12/16 endmill cutter up to 1.25"

**at a 60% Additional Discount**



The image shown is for representational purposes.



**MAXVALUE**

MINIMUM COST MAXIMUM OUTPUT



A smart, cost-saving solution for indexable face milling, delivering **greater part-making capability with fewer tools to stock** and the right tool for the job **with outstanding value and efficiency.**

**YOU**

**MACHINING**

**INTELLIGENTLY?**

Use Promo Code: **T2806**

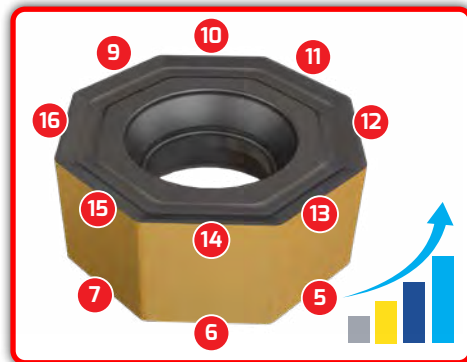
**1 Purchase**

20 inserts - S845 SNMU/HU 13... or ONMU/HU 05... same size any assortment

**Receive**

Corresponding SOE45 8/16... endmill cutter up to 1.25"

**at a 60% Additional Discount**



Use Promo Code: **T2806**

**2 Purchase**

40 inserts - S845 SNMU/HU 13... or ONMU/HU 05... same size any assortment

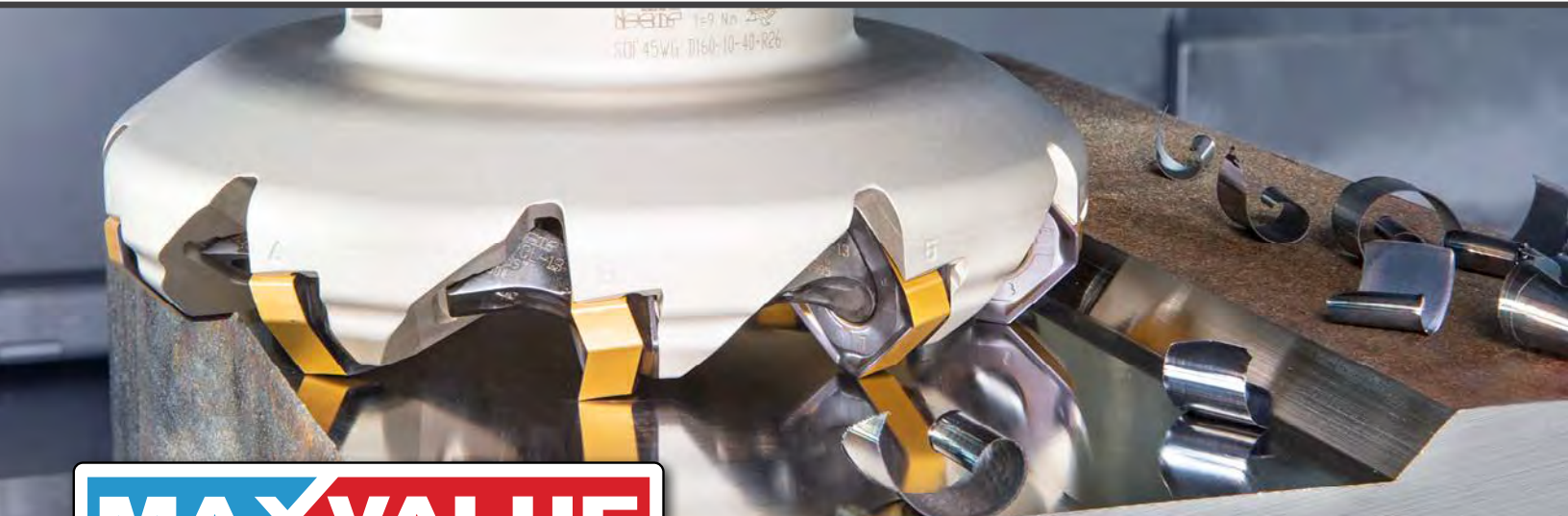
**Receive**

Corresponding SOF45 8/16... face mill cutter up to 5.00"

**at a 60% Additional Discount**



The image shown is for representational purposes.



**MAX VALUE**  
MINIMUM COST MAXIMUM OUTPUT



With 3 indexable cutting edges, the small high-feed trigon insert delivers **efficient, productive roughing** and proves that compact inserts can make a big performance impact.

**YOU**

MACHINING

INTELLIGENTLY?

Use Promo Code: **T2807**

### 1 Purchase

20 inserts - FFT3 WXMT 03... any assortment

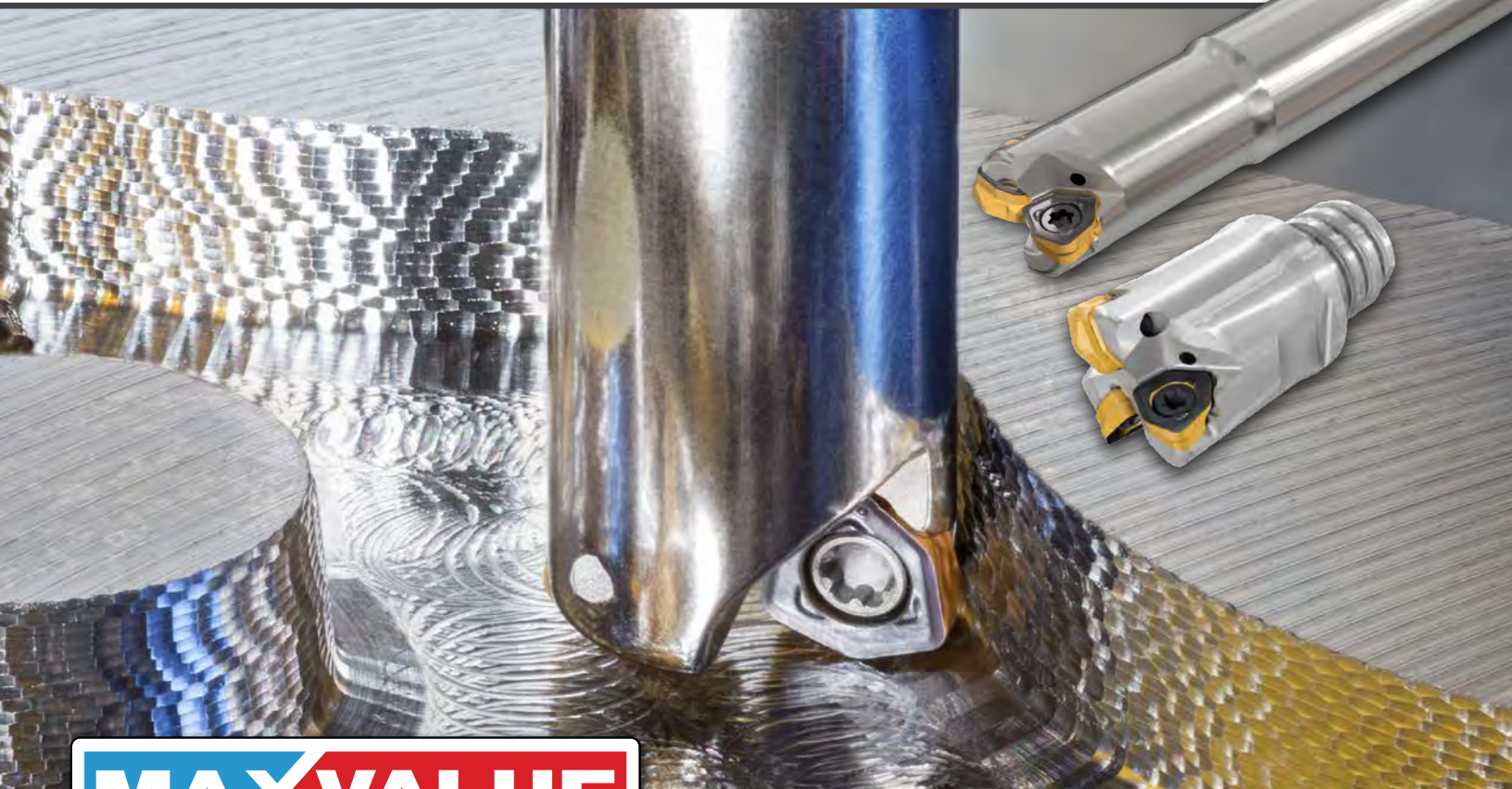
### Receive

Corresponding FFT3 EFM D...-03 endmill cutter up to 1.00"

**at a 60% Additional Discount**



The image shown is for representational purposes.



# MAXVALUE

MINIMUM COST MAXIMUM OUTPUT



A material-efficient triangular insert with 3 cutting edges **boosts productivity through longer tool life and delivers accurate 90° square-shoulder milling while reducing carbide scrap through full-edge utilization.**

**YOU**

MACHINING

**INTELLIGENTLY?**

Use Promo Code: **T2808**

**1 Purchase**

20 inserts - HM390 TPKT/CT 05...- any assortment

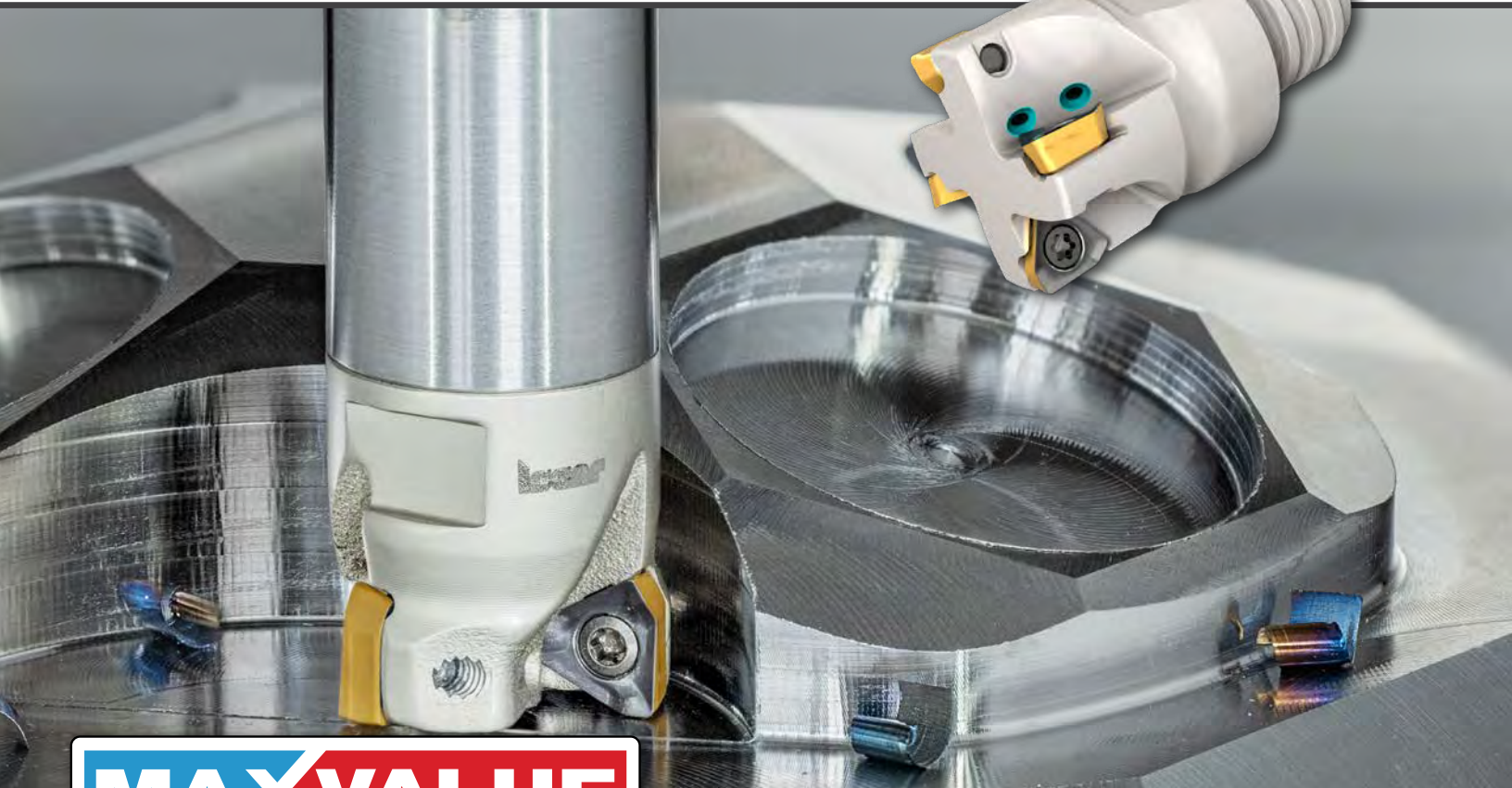
**Receive**

Corresponding HM390 ETP...-05  
endmill cutter up to .625"

**at a 60% Additional Discount**



The image shown is for representational purposes.



**MAX VALUE**

**MINIMUM COST MAXIMUM OUTPUT**



With 4 cutting edges and a depth of cut of up to .315", this robust double-sided insert delivers a **high-productivity milling solution with excellent cost per edge.**

**YOU**

**MACHINING**

**INTELLIGENTLY?**

Use Promo Code: **T2809**

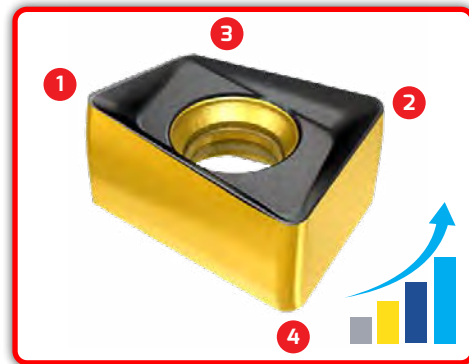
**1 Purchase**

20 inserts - H490 ANKX/CX 09... same size any assortment

**Receive**

Corresponding H490 E90AX...-09 endmill cutter up to 1.25"

**at a 60% Additional Discount**



Use Promo Code: **T2809**

**2 Purchase**

40 inserts - H490 ANKX/CX 09... same size any assortment

**Receive**

Corresponding H490 F90AX...-09 face mill cutter up to 2.50"

**at a 60% Additional Discount**

The image shown is for representational purposes.



**MAX VALUE**

**MINIMUM COST MAXIMUM OUTPUT**



With 4 indexable cutting edges, the small-sized insert enables higher tooth density in high-feed milling cutters for **increased productivity**.

**YOU**

MACHINING

INTELLIGENTLY?

Use Promo Code: **T2810**

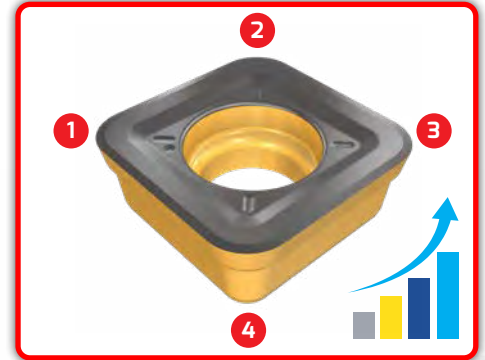
## 1 Purchase

20 inserts - FFQ4 SOMT/W 06...  
same size any assortment

## Receive

Corresponding FFQ4 D...-06  
endmill cutter up to 1.25"

**at a 60% Additional Discount**



The image shown is for representational purposes.



**MAX VALUE**

MINIMUM COST MAXIMUM OUTPUT



A full range of cost-efficient **MULTI-MASTER** tools with exchangeable cutting heads offers 40,000 solid carbide endmill combinations, delivering unmatched versatility for diverse machining applications. The **MULTI-MASTER** range enables efficient roughing and finishing, superior surface quality, and increased productivity across virtually any material.

**YOU**

MACHINING

INTELLIGENTLY?

Use Promo Code: **T2811**

## 1 Purchase

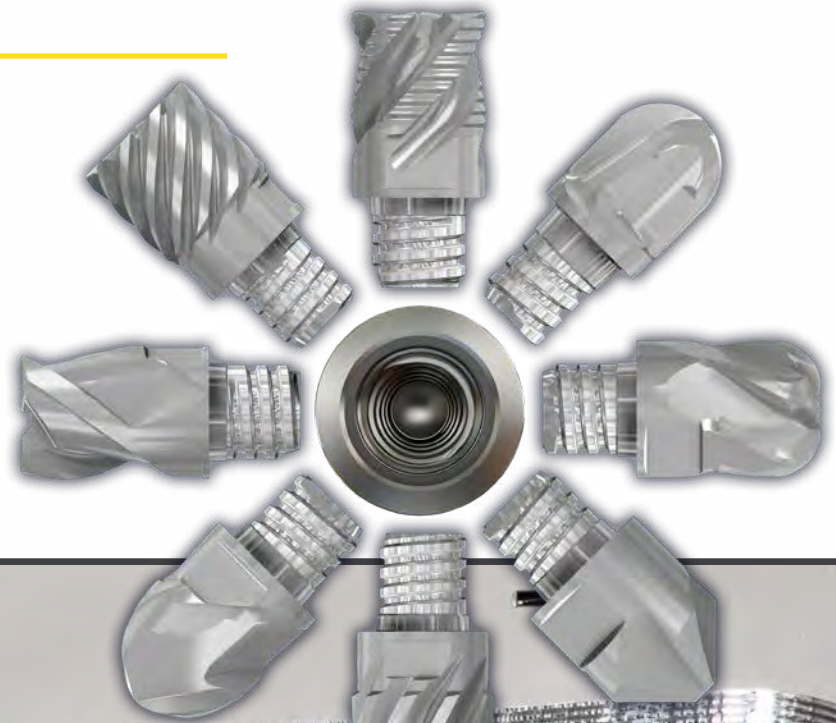
6 MULTI-MASTER inserts - up to .75" included same size any assortment

## Receive

Corresponding steel shank up to .75"\*

## Free of Charge

\* Integral/CAMFIX shanks doesn't included  
The image shown is for representational purposes.



**MAX VALUE**

MINIMUM COST MAXIMUM OUTPUT



Exchangeable heads bring modular versatility to drilling, **lowering tooling costs, enabling productive performance across a wide range of materials, and reducing carbide scrap by replacing only the head instead of the entire tool.**

**YOU**

MACHINING

**INTELLIGENTLY?**

Use Promo Code: **T2812**

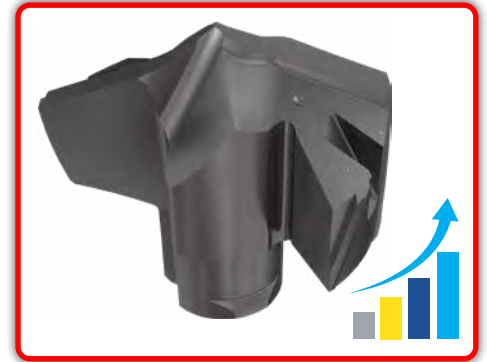
### 1 Purchase

4 inserts - ICP/HCP/ICK/ICM/QCP/FCP/IHP/ICN same size any assortment

#### Receive

Corresponding DCN/DCNS/DCNM/DCNT/DCN...-MMT/DCN...-PICCO drill body up to 3XD up to 1.00"

**Free of Charge**



Use Promo Code: **T2812**

### 2 Purchase

6 inserts - ICP/HCP/ICK/ICM/QCP/FCP/IHP/ICN same size any assortment

#### Receive

Corresponding DCN/DCNS/DCNM/DCNT/DCN...-MMT/DCN...-PICCO drill body 5XD up to 1.00"

**Free of Charge**

**SPECIAL OFFER**

Use Promo Code: **T2812**

### 3 Purchase

8 inserts -ICP/HCP/ICK/ICM/QCP/FCP/IHP/ICN same size any assortment

#### Receive

Corresponding DCN/DCNS/DCNM/DCNT/DCN...-MMT/DCN...-PICCO drill body 8XD up to 1.00"

**Free of Charge**

The image shown is for representational purposes.



**MAX VALUE**  
MINIMUM COST MAXIMUM OUTPUT



All-in-one multi-functional tool to increase efficiency and cut costs

**YOU**

MACHINING

INTELLIGENTLY?

Use Promo Code: **T2813**

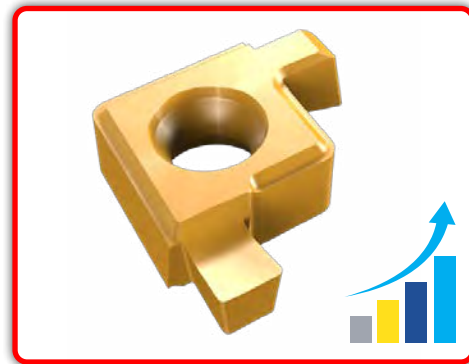
## 1 Purchase

30 inserts - XCMT...-MF / XCMT...-MG  
same size any assortment

## Receive

Corresponding DR-MF / DRG-MF... drill body

**at a 50% Additional Discount**



The image shown is for representational purposes.



**MAX VALUE**

MINIMUM COST MAXIMUM OUTPUT



**PICCO-INDEX** tools offer an economical choice for small-part machining, combining roughing, semi-finishing, and finishing capabilities with superior chip control and low costs.

**YOU**

MACHINING

**INTELLIGENTLY?**

Use Promo Code: **T2814**

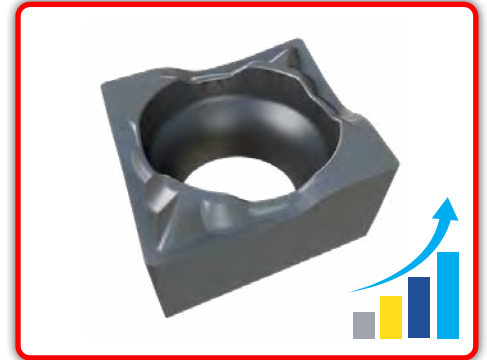
## 1 Purchase

10 carbide inserts - CCGT 03 / WBMT 06 / WBGT 06 / CCGW 03 / CCMT 06 same size any assortment

### Receive

Corresponding PICIN... INDEX holder

**at a 50% Additional Discount**



Use Promo Code: **T2814**

## 2 Purchase

2 CBN inserts - CCGT 03 / WBMT 06 / WBGT 06 / CCGW 03 / CCMT 06 same item

### Receive

Corresponding PICIN... INDEX holder

**at a 50% Additional Discount**

The image shown is for representational purposes.



**MAX VALUE**

**MINIMUM COST MAXIMUM OUTPUT**



**Maximize efficiency and minimize raw material waste** with narrow-cut inserts designed for parting and slitting.

**YOU**

**MACHINING**

**INTELLIGENTLY?**

Use Promo Code: **T2815**

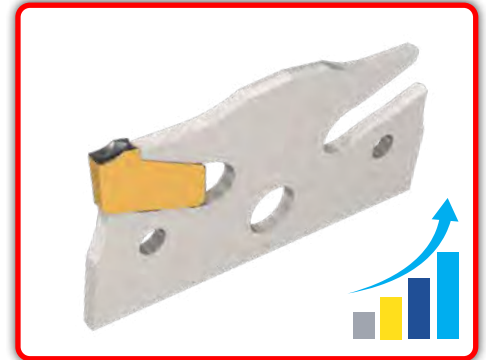
**1 Purchase**

10 inserts - GFT 0.8../1.0../1.2... same size any assortment

**Receive**

Corresponding SGAQ blade

**at a 60% Additional Discount**



Use Promo Code: **T2815**

**2 Purchase**

30 inserts - GFT 0.8../1.0../1.2... same size any assortment

**Receive**

Corresponding SGST slitting cutter up to 2.50"

**at a 60% Additional Discount**

The image shown is for representational purposes.



**MAXVALUE**  
MINIMUM COST MAXIMUM OUTPUT



With a durable pocket design and ultra-rigid clamping, the tool delivers **precise cuts, longer tool life, and maximum efficiency in parting, grooving, and slitting applications.**

**YOU**

**MACHINING**

**INTELLIGENTLY?**

Use Promo Code: **T2816**

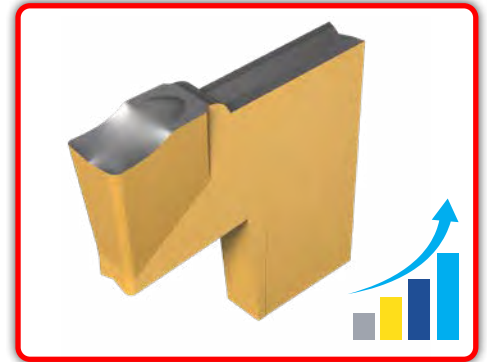
**1 Purchase**

10 inserts - TAG 1.4 / 1.6 / 2.0  
same size any assortment

**Receive**

Corresponding TGFH / TGSU / TGTR / TGTL  
blade or integral holder

**at a 60% Additional Discount**



The image shown is for representational purposes.



**MAXVALUE**  
MINIMUM COST MAXIMUM OUTPUT



The double-sided insert is a **cost-effective solution for parting up to .866"** on Swiss-Type machines, with its narrow cutting widths **maximizing raw material savings.**

## YOU

## MACHINING

## INTELLIGENTLY?

Use Promo Code: **T2817**

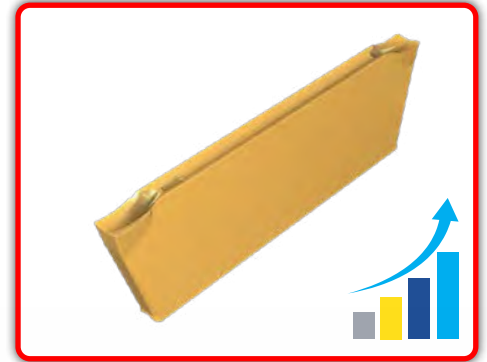
### 1 Purchase

10 narrow inserts - DGN 0.8 / 1.0 / 1.2 same size any assortment

### Receive

Corresponding DGTR / DGTL / DGPAD / NQCH integral holder

**at a 60% Additional Discount**



The image shown is for representational purposes.



# MAX VALUE

MINIMUM COST MAXIMUM OUTPUT



The double-sided insert offers a **cost-effective solution for high-performance parting of larger diameters up to 2.4"**, with narrow cutting widths that maximize raw material savings.

# YOU

# MACHINING

# INTELLIGENTLY?

Use Promo Code: **T2818**

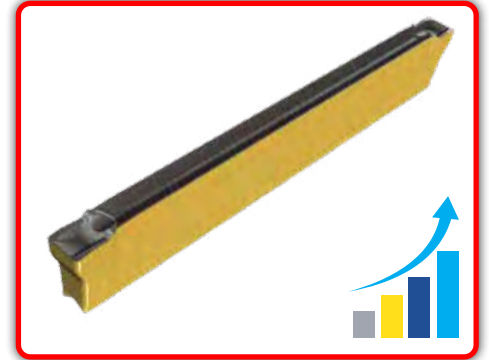
## 1 Purchase

10 inserts - DGN/R/L 2...-XL  
same size any assortment

## Receive

Corresponding DGTR / DGTL  
integral holder

# at a 60% Additional Discount



The image shown is for representational purposes.



# MAXVALUE

## MINIMUM COST MAXIMUM OUTPUT



This robust 2 cutting edges insert, tangentially clamped for **superior stability, delivers longer tool life and allows narrow cutting widths for maximum raw material savings.**

**YOU**

MACHINING

INTELLIGENTLY?

Use Promo Code: **T2820**

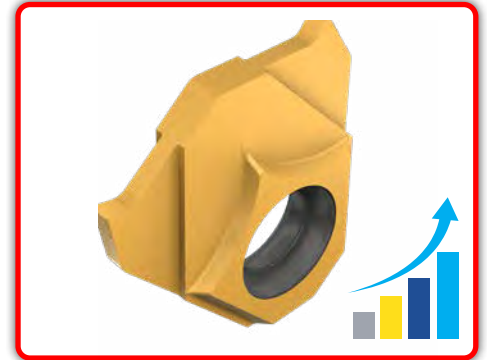
## 1 Purchase

10 inserts - TGV...  
same size any assortment

## Receive

Corresponding TGVR/L ... holder

**at a 60% Additional Discount**



The image shown is for representational purposes.



**MAX VALUE**

**MINIMUM COST MAXIMUM OUTPUT**



Pentagonal inserts with 5 cutting edges offer a **cost-effective solution for grooving while minimizing raw material waste during parting operations.**

**YOU**

MACHINING

INTELLIGENTLY?

Use Promo Code: **T2821**

**1 Purchase**

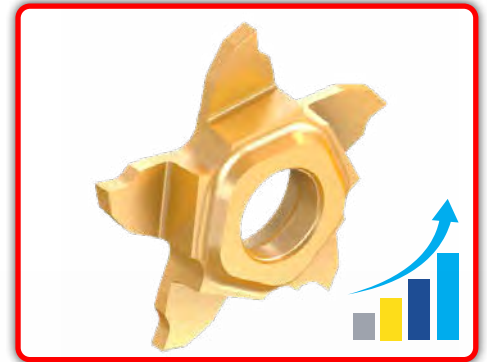
5 inserts - PENTA 17...any assortment

**Receive**

Corresponding PCHRS / PCHLS ... blade

**at a 60% Additional Discount**

**SPECIAL OFFER**



The image shown is for representational purposes.



**MAXVALUE**

**MINIMUM COST MAXIMUM OUTPUT**



The 80° design features double-sided, 4-edge CXMG inserts that replace 2-edge CCMT inserts. A dovetail pocket **enhances stability, extends tool life, and reduces cost per part on Swiss-Type and compact lathes.**

**YOU**

MACHINING

INTELLIGENTLY?

Use Promo Code: **T2822**

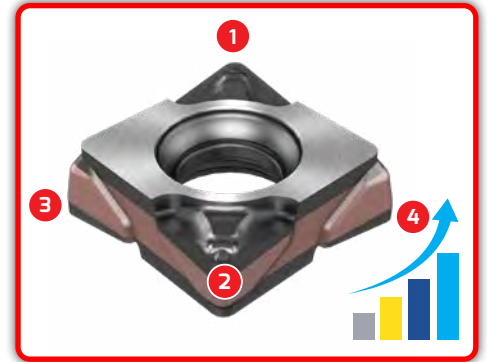
## 1 Purchase

20 inserts - CXMU / CXGU 06...any assortment

## Receive

Corresponding tool holder\*

**at a 50% Additional Discount**



\* SCLXR / SCLXL / AVC-SCLXR / AVC-SCLXL / A...-SCLXR / A...-SCLXL ...

The image shown is for representational purposes.



**SPECIAL OFFER**

**MAX VALUE**  
MINIMUM COST MAXIMUM OUTPUT



A unique six-edged positive insert offering a **cost-effective alternative** to ISO DCMT/TCMT for semi-finishing and finishing turning, **delivering more cutting edges and a lower cost per part.**

**YOU**

MACHINING

**INTELLIGENTLY?**

Use Promo Code: **T2823**

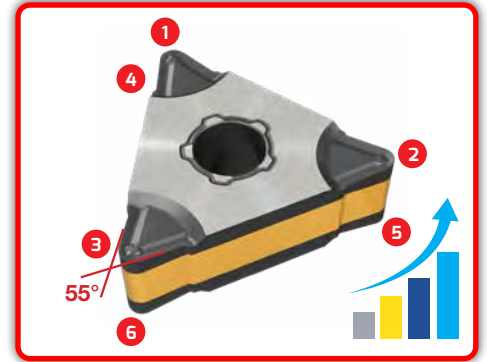
## 1 Purchase

20 inserts - D6NMG... any assortment

## Receive

Corresponding tool holder

**at a 50% Additional Discount**



\* MTENN-W / MTJNR/L-W / PTFNR/L / DTGNR/L / PTGNR/L-X / AVC-PTLNR/L / NQCH-PTJNR/L-S-JHP / S-MTLNR/L-W / S-PTFNR/L / A-PTFNR/L-X/G..

The image shown is for representational purposes.

**SPECIAL  
OFFER**

**MAX VALUE**

**MINIMUM COST MAXIMUM OUTPUT**



**QUICK-TURN** double-sided inserts with six cutting edges enable high-feed, multi-directional machining to boost productivity and reduce costs.

**YOU**

**MACHINING**

**INTELLIGENTLY?**

Use Promo Code: **T2824**

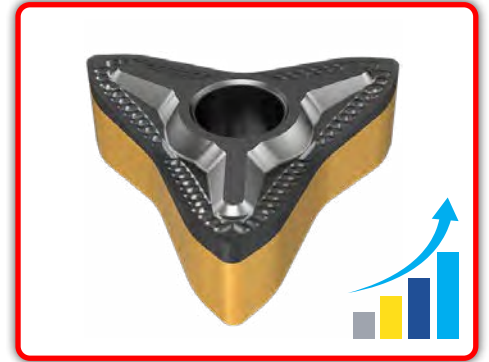
**1 Purchase**

20 inserts - Q6 MNMG 12... any assortment

**Receive**

Corresponding Q6 DMXNN/R/L... tool holder\*

**at a 50% Additional Discount**



\* CAMFIX Holder are not included

The image shown is for representational purposes.

**SPECIAL  
OFFER**

**MAX VALUE**

**MINIMUM COST MAXIMUM OUTPUT**

**MINIMUM COST**

**MAXIMUM OUTPUT**

**MORE** PERFORMANCE  
PRODUCTIVITY  
PROFITABILITY

**MAX VALUE**

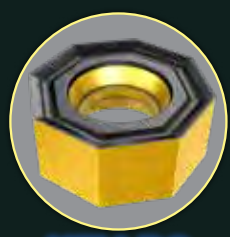
# MAXOUT

**MINIMUM COST**

**MAXIMUM OUTPUT**



LOGIQ-4-TURN



HELI-DO



ISOTURN



TANG-GRIP



HELI-TANG



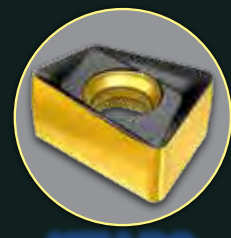
LOGIQ-6-TURN



DO-GRIP XL



MICRO-3-FEED



HELI-DO



HELI-3-MILL



SLIM-GRIP



SUMOCHAM



MULTI-MASTER



QUICK-D-MILL



PENTACUT

Distributed By:



**Tool+Cutter**

www.toolandcutter.com

support@toolandcutter.com

1.800.265.6056





**Tool+Cutter**  
www.toolandcutter.com



Member IMC Group  
**iscnt**

**MINIMUM COST**

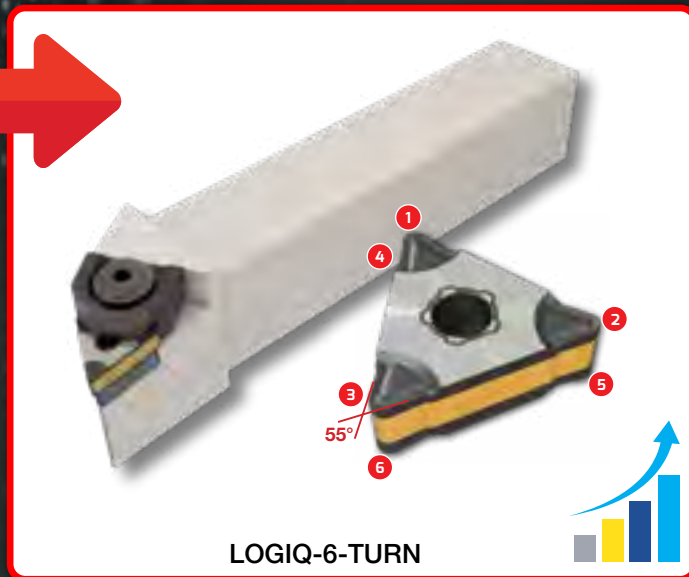
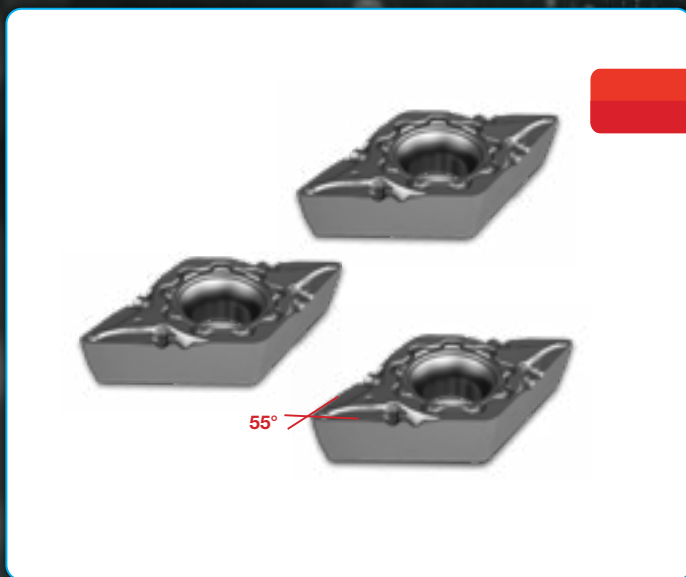
**MAXIMUM OUTPUT**

**MORE** PERFORMANCE  
PRODUCTIVITY  
PROFITABILITY

**MAX VALUE**

**MAX VALUE**

**MINIMUM COST MAXIMUM OUTPUT**



LOGIQ-6-TURN



A unique six-edge positive insert as a **cost-effective alternative** to ISO DCMT/TCMT for semi-finishing and finishing turning, **providing more cutting edges and lower cost per part.**

**LOGIQ6** <sup>FINISH</sup> **TURN**



**Compatible with:**

AVC-PTLNR/L
NQCH-PTJNR/L-S-JHP
MTENN-W
MTJNR/L-W
PTFNR/L
PTGNR/L
S-MTLNR/L-W
S-PTFNR/L
PTFNR-CA
DTGNR/L
PTGNR/L-X
PTGNR/L-X-JHP
A-PTFNR/L-X/G
PTGNR/L-X-JHP-MC



**MAX VALUE**  
MINIMUM COST MAXIMUM OUTPUT



LOGIQ-4-TURN



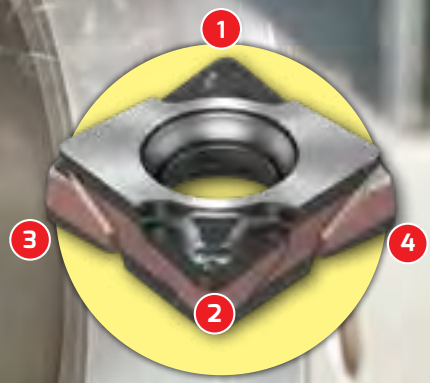
The 80° design uses double-sided, 4-edge CXMG inserts to replace 2 edge CCMT inserts. A dovetail pocket **enhances stability and tool lifespan and lowers the cost per part on Swiss-Type and compact lathes.**

**LOGIQ4TURN**

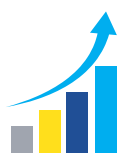


**Compatible with:**

A/E-SCLXR/L-06X
SCLXR/L 06X-JHP
SCLXR/L 06XS-JHP-MC
SCLXR/L 06X
SCLXR/L 06XS
NQCH-SCLXR/L-JHP
AVC-SCLXR/L-06X
A/E-SCLXR/L-06X
SCLXR/L 06X-JHP
SCLXR/L 06XS-JHP-MC
SCLXR/L 06X
SCLXR/L 06XS
NQCH-SCLXR/L-JHP
AVC-SCLXR/L-06X



**MAX VALUE**  
MINIMUM COST MAXIMUM OUTPUT

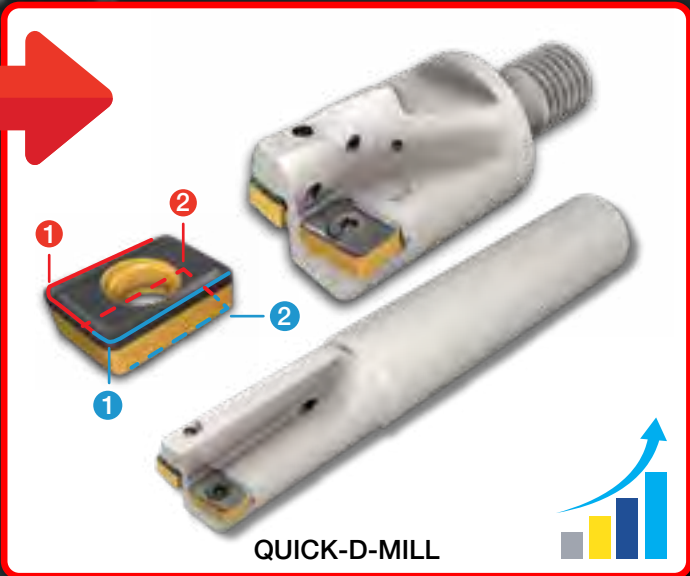
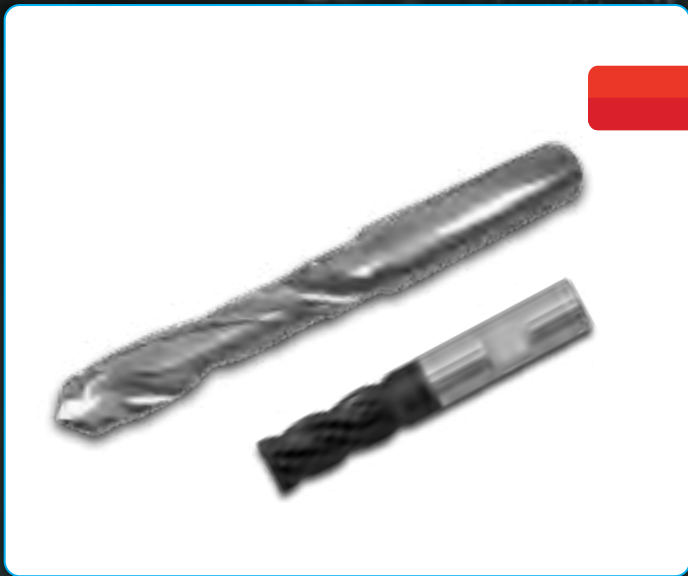


 ISCAR FlashTurn can be **more economical than normal-size inserts** due to **lower costs per cutting edge, reduced changeover and cycle times, increased operational efficiency, and decreased scrap and inventory costs.**



# MAX VALUE

MINIMUM COST MAXIMUM OUTPUT



The ultimate all-in-one indexable tool combining both Milling and Drilling **to boost versatility and maximize insert utilization for better cost efficiency.**



Compatible with:

MDR ANHU FR-P
MDR ANMU PNTR
MDR MMT-JHP
MDR D-C-AN
MDR M-JHP

**MAX VALUE**  
MINIMUM COST MAXIMUM OUTPUT



HELI-DO



The smart, cost-cutting choice for indexable face milling — offering **more part-making capability with fewer tools to stock**, delivering the right tool for the job **with strong value and efficiency**.



Compatible with:

S845 SNMU/SNHU-13
ONHU/ONMU-05
SOE45 8/16
SOF45

**MAX VALUE**  
MINIMUM COST MAXIMUM OUTPUT



HELI-TANG



This miniature, double-sided tangential insert with four cutting edges is a **cost-efficient way to achieve stable, accurate 90° milling at shallow depths.**

**HELI TANG**  
T490 LINE



Compatible with:

T490 LNMT 0502
T490 ELN-MM-05
T490 ELN-05
T490 FM-05
T490 ELN-MM-08
T490 ELN-M
T490 LNM-08
T490 SM-08
T490 ELN-08
T490 LNM-M-08
T490 FLN-08



**MAX VALUE**  
MINIMUM COST MAXIMUM OUTPUT



A small-sized insert ensures 4 indexable cutting edges and provides increased tooth density for high-feed milling cutters to **boost productivity.**



**MILL 4 FEED**



Compatible with:

- FFQ4 D-06
- FFQ4 D-CW-06
- FFQ4 D-M-06
- FFQ4 D-MM-06

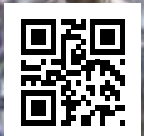


# MAX VALUE

MINIMUM COST MAXIMUM OUTPUT



The small high-feed trigon insert with three indexable cutting edges for efficient, productive roughing is proving compact inserts can still deliver a big performance impact.



Compatible with:

- FFT3 WXMT 03
- FFT3 EFM-03
- FFT3 EFM-MM 03



# MAX VALUE

MINIMUM COST MAXIMUM OUTPUT



HELI-3-MILL



A material-efficient triangular insert with three cutting edges **boosts productivity with longer tool life and delivers accurate 90° square-shoulder milling while reducing carbide scrap through full-edge utilization.**

## HELI 3 MILL

HM390 LINE



- Compatible with:
- HM390 TPKT/CT 0502
  - HM390 ETP/C/D-MM-JHP
  - HM390 ETP-05
  - HM390 ETP-MM-05

**MAX VALUE**  
**MINIMUM COST MAXIMUM OUTPUT**



HELI-DO



This robust, double-sided insert features four cutting edges with a depth of cut up to 8mm **providing a high-productivity milling solution with an excellent cost-per-edge.**



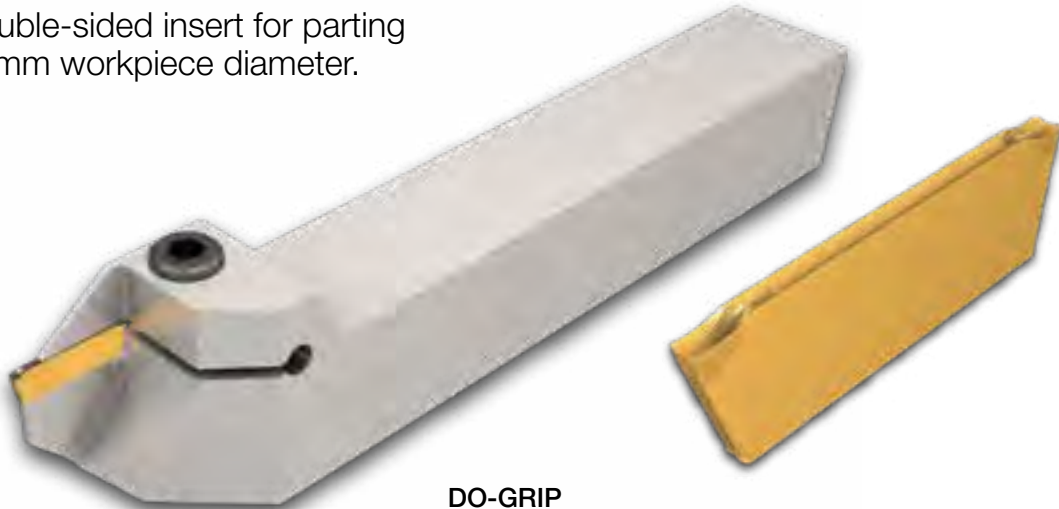
Compatible with:

- H490 ANKX/ANCX-09
- H490 F90AX-09
- H490 E90AX-M
- H490 E90AX-MM
- H490 E90AX-09
- H490 ANK-09

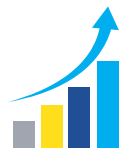
**MAX VALUE**

**MINIMUM COST MAXIMUM OUTPUT**

Narrow double-sided insert for parting up to a 22mm workpiece diameter.



**DO-GRIP**  
0.8, 1.0, 1.2mm cutting width



The double-sided insert is **a cost-effective choice for parting up to 22mm** on Swiss machines, with its narrow cutting widths **delivering maximum raw material savings.**

**DO-GRIP**



**Compatible with:**

NQCH-DGTR/L-D22-SH-JHP

DGTR/L-B-D-SH  
(narrow cut)

DGPAD-D12/22-JHP

# MAX VALUE

MINIMUM COST MAXIMUM OUTPUT

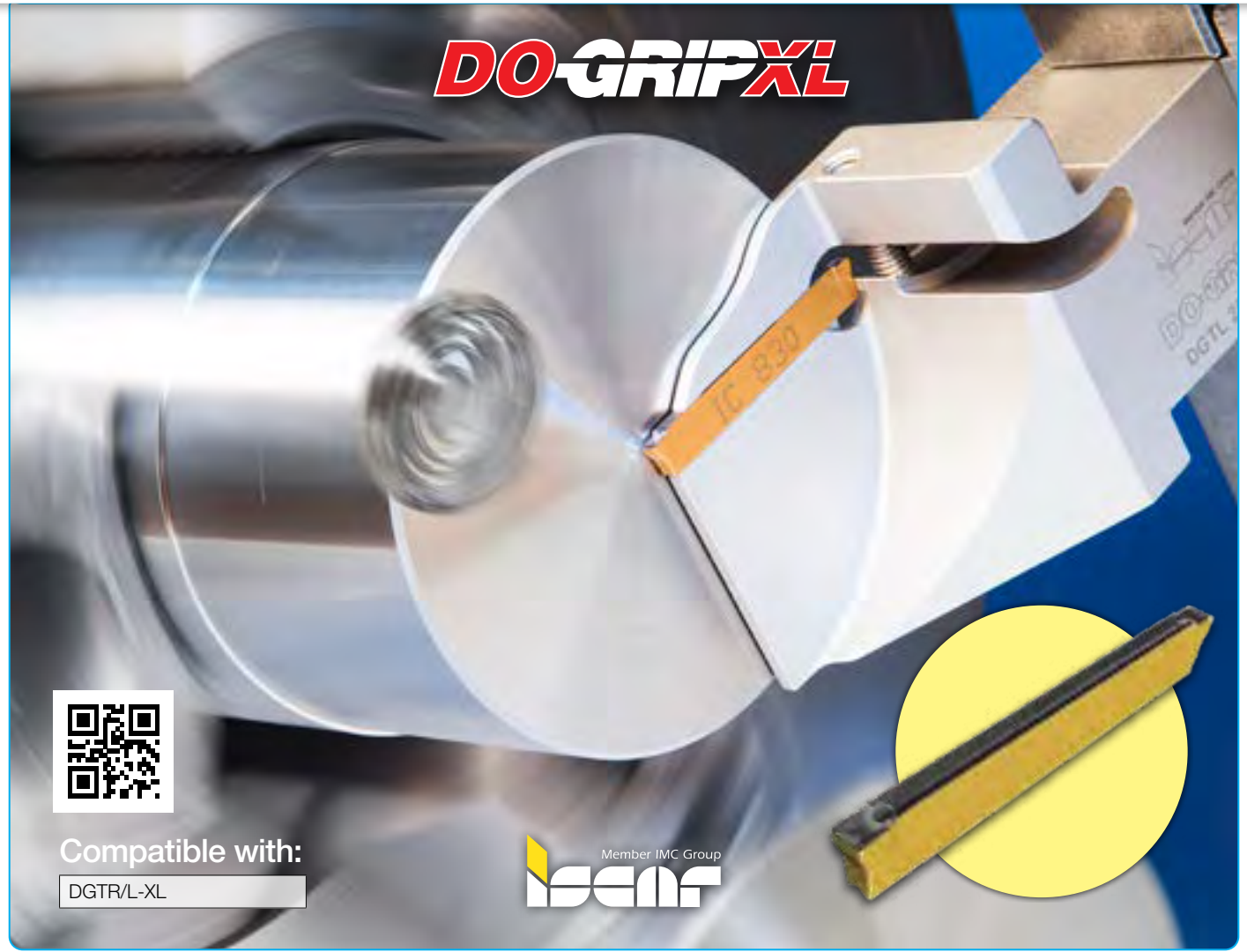
Extra long insert for parting  
up to a 60mm workpiece diameter.



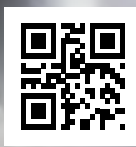
DO-GRIP-XL  
2mm cutting width



The double-sided insert is **an economic way to achieve high performance parting larger diameters up to 60mm, with narrow cutting widths for maximum raw material savings.**



## DO-GRIPXL

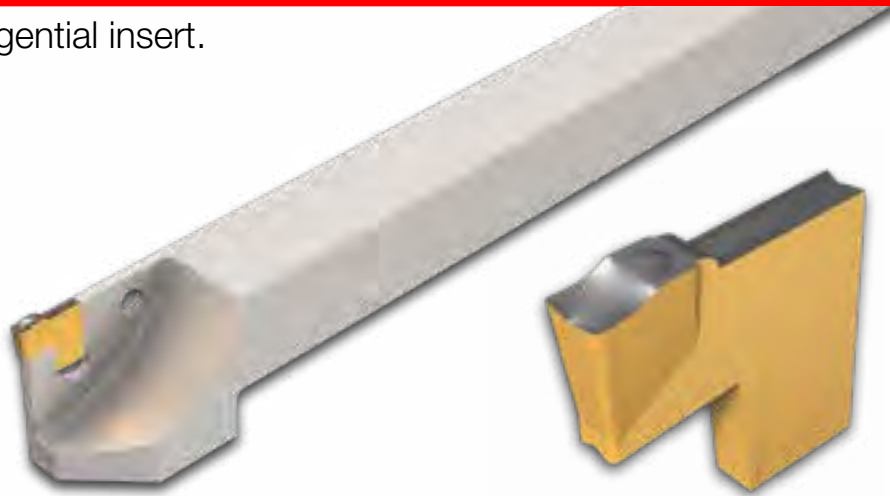


Compatible with:  
DGTR/L-XL

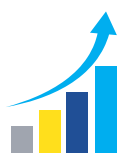


**MAX VALUE**  
MINIMUM COST MAXIMUM OUTPUT

Narrow tangential insert.



TANG-GRIP  
1.4-2.0mm cutting width



The durable pocket design and ultra-rigid clamping **deliver precise cuts, extended tool life, and maximum efficiency in parting, grooving, and slitting.**

**TANG-GRIP**  
PARTING LINE



Member IMC Group

Compatible with:

TAG N-C/N/W
TGFH/R/L
TGTRL-IQ
TGAD
TGSU



# MAXVALUE

MINIMUM COST MAXIMUM OUTPUT

Mini PENTA, size 17  
for prescription grooving  
and parting up to a 8mm  
workpiece diameter.



Mini PENTA 17  
0.25 up to 2mm cutting width



Pentagonal inserts featuring 5 cutting edges **provide a cost-effective solution for grooving while minimizing raw material waste during parting operations.**

## PENTACUT



Compatible with:

PCHRS/LS-17
PCHRS/LS-17-JHP
NQCH-PCHR/L-S-JHP
NQCH-JHP

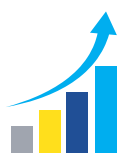
# MAX VALUE

MINIMUM COST MAXIMUM OUTPUT

For precision grooving and parting up to a 12mm workpiece diameter.



QUICK-2-CUT  
0.33 up to 2mm cutting width



A robust insert with two cutting edges, tangentially clamped **for superior stability, extends tool life and enables narrow cutting widths for maximum raw material savings.**

## QUICK<sup>2</sup>CUT<sup>MINI</sup>



Compatible with:

- TGVR/L-JHP
- NQCH-TGVR/L-JHP



# MAX VALUE

MINIMUM COST MAXIMUM OUTPUT

Narrow SELF-GRIP inserts suitable for parting up to a 16mm bar diameter and narrow slitting.



SLIM-GRIP  
0.6-up to 1.6mm cutting width



**Minimize raw material waste and maximize efficiency** with the narrow-cut inserts for parting and slitting.



## SLIMGRIP

NARROW INSERTS



Compatible with:

SGST
SGAQ

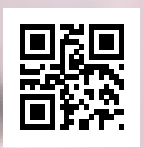


**MAX VALUE**  
MINIMUM COST MAXIMUM OUTPUT



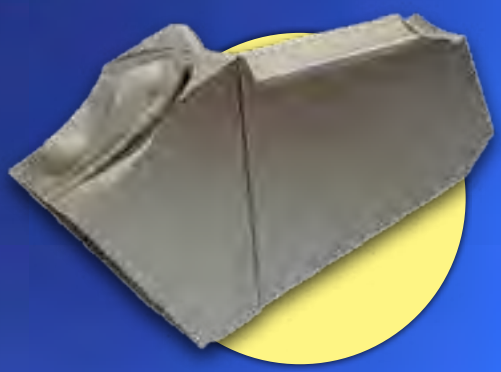
The proven original cut-off solution designed **to significantly reduce parting costs with enduring performance and reliability.**

**SELF-GRIP**



Compatible with:

SGFH/R/L
SGTFR/L
SGTFR/L-D
SGFHR/L-26T/32T



**MAX VALUE**  
MINIMUM COST MAXIMUM OUTPUT



SUMO-CHAM



Exchangeable heads add modular drilling versatility **while lowering tooling costs delivering productive drilling across many materials and reducing carbide scrap by replacing only the head, not the whole tool.**

**SUMOCHAM**



Compatible with:

- DCN A-1.5D
- DCN R-1.5D
- DCN A-3D
- DCN R-3D
- DCN A-5D
- DCN R-5D
- DCN A-8D
- DCN R-8D
- DCN R-12D
- DCN C-3D
- DCN C-5D
- DCN C-8D
- DCN C-12D
- DCNM
- FLEX-FIT HOLDER
- DCN-MM
- DCN-PICCO
- DRG-MF



**MINIMUM COST**

**MAXIMUM OUTPUT**

**MORE** PERFORMANCE  
PRODUCTIVITY  
PROFITABILITY

**MAX VALUE**