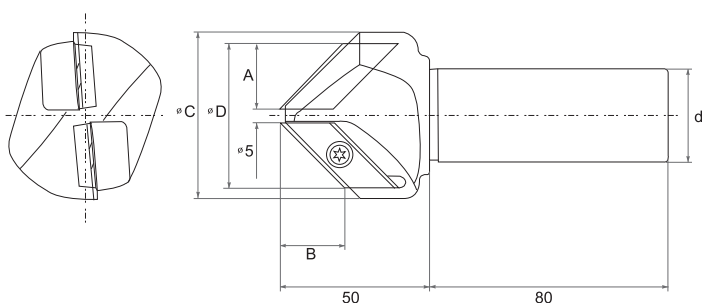
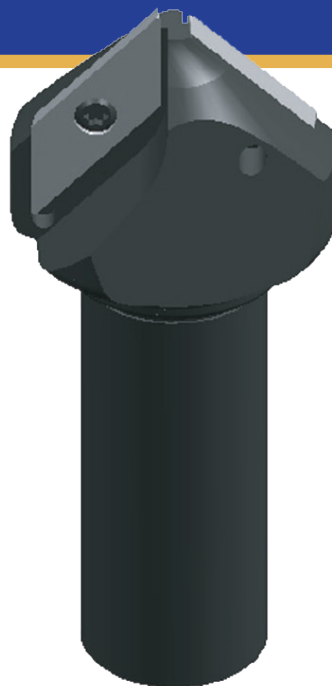


UNION MATERIALS CHAMFER MILLS

Designed for large chamfers and Countersinking

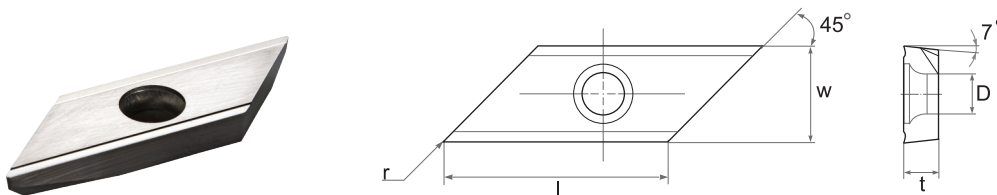


PARTNUMBER	DIMENSIONS						NUMBER OF TEETH	PRICE
	INCL. ANGLE	A	B	ØC	ØD	d		
TER3000007	60°	0.610"	1.004"	1.850"	1.690"	1.000"	2	\$357.28
TER3000008	82°	0.807"	0.807"	2.200"	1.810"	1.000"	2	\$357.28
TER3000009	90°	0.866"	0.807"	2.200"	1.810"	1.000"	2	\$357.28
TER3000010	120°	1.043"	0.590"	2.830"	2.170"	1.000"	2	\$406.56

Work Material	Feed (IPT)	Speed (RPM)
Carbon Steels	.004 ~ .010"	3000 RPM (1000 ~ 4400 RPM)
Stainless Steels		
Cast Irons		
Die Steels	.004 ~ .008"	
Alloy Steels		

Inserts

TER3000001 - SCW300 AITiN coated carbide for higher speed applications



INSERT	INSERT DIMENSIONS					GRADE & PRICE PER INSERT	
	l	w	t	D	r	SCW300	
XCET 031040 ER	0.866"	0.500"	0.177"	0.220"	0.016"	\$67.14	

NEW
SCW300
AITiN Coated

Up to

50%

LONGER
TOOL LIFE

than TiN coated inserts.

ALL IN STOCK
AT
TOOL & CUTTER

Spare Screws
#TER3000011

\$7.36
each

Inserts sold in

PACKS
OF
FIVE